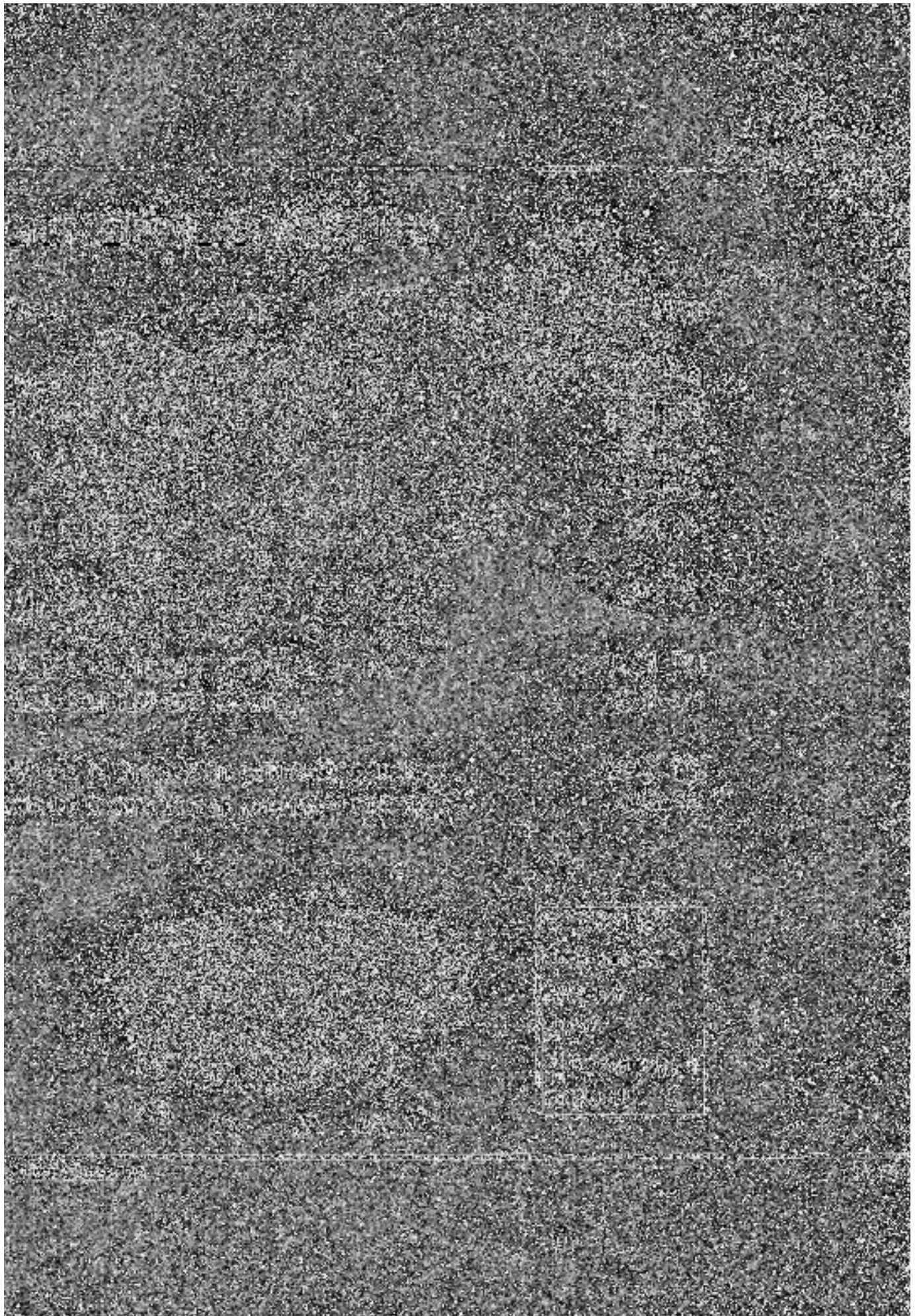


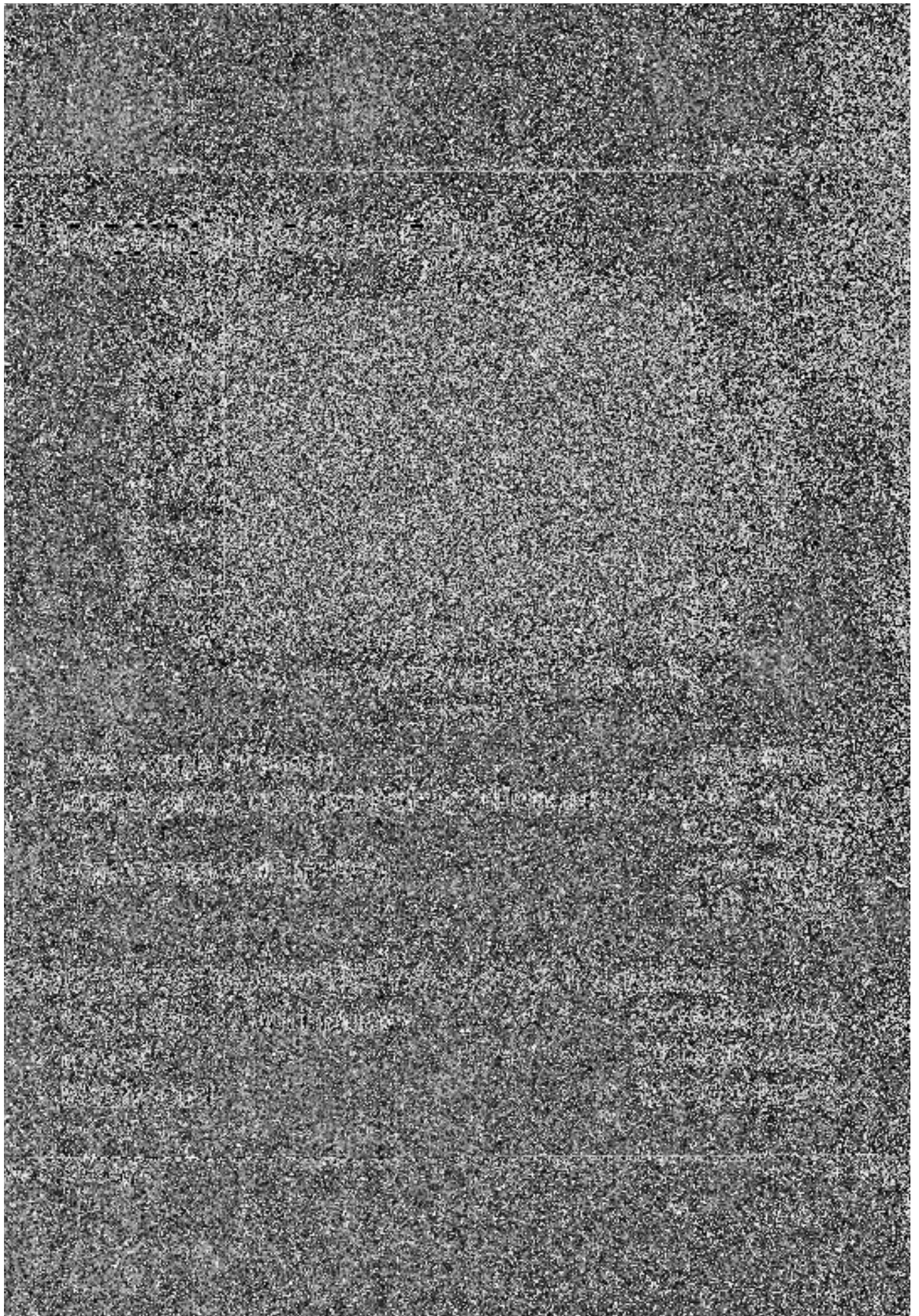
Wood Biomass as a Potential Energy Source in Slovenia

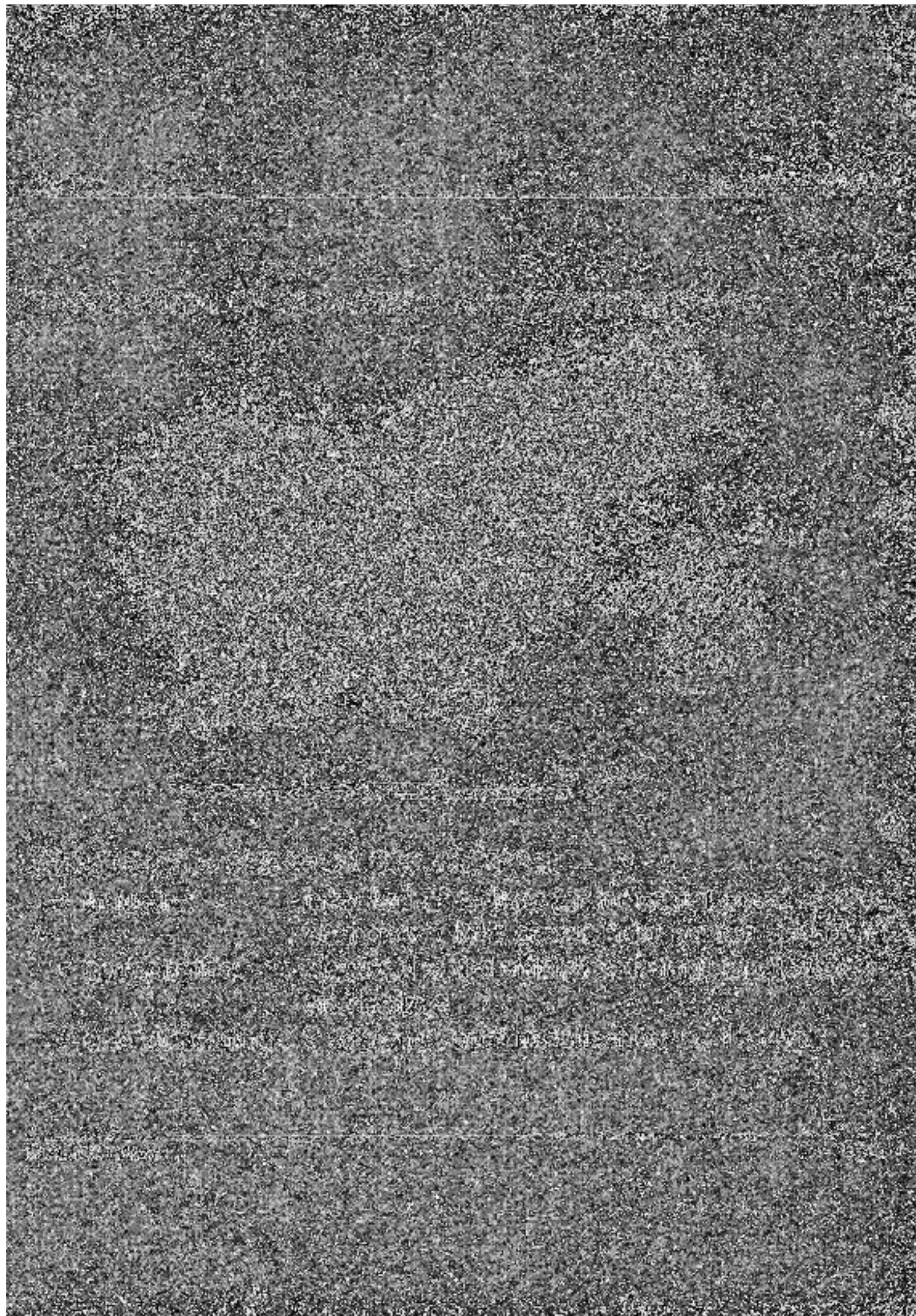
Wäxjö, 18 January 2001

Jani Turk

University of Ljubljana
Faculty of Mechanical Engineering
Center for Energy and Environmental Technologies
1000 Ljubljana, Slovenia
e-mail: jani.turk@fs.uni-lj.si







SLOVENIAN ENERGY LAW (SEPT. 1999) ENSURES

- a reliable and high quality energy supply
- the long term sustainable development of energy economy regarding energy use
- stimulation of RES use
- support for giving priority to the efficient use of energy and to RES utilization instead of to conventional energy sources
- support for competitiveness on the energy market
- ecological acceptability during acquisition, production, transportation and utilization of all energy sources
- consumer protection

STATE FORECASTS

- increase the share of RES in primary energy to 12% by 2010
- increase the share of wood biomass in primary energy to 10% by year 2010

POSSIBLE FUTURE SCENARIO

- industry: replacement of inefficient industrial wood biomass boilers in conjunction with feasibility studies of district heating for local communities
- households: replacement of old boilers (200 units to 2010)
- district heating: 50 district heating systems using wood biomass by the year 2010

Planned measures:

- adoption of national program for (wood) biomass utilization
- ensuring adequate financial funds for the realization of the national program (State funding, Ecology Fund, Fund for Effective Energy Use, EU financial fund)
- part of CO₂ tax funds for RES investments
- incorporation into EU programs (ALTENER II)
- energy plans for local communities in order to define short- and long term strategy of energy supply
- promotion of successful pilot projects

CONCLUSIONS

- wood biomass is the most important RES in Slovenia; it will remain also in the future
- energy and ecological un-efficient equipment should be replaced by modern technologies
- to 2010 additional 16 PJ/year of energy should be produced from wood biomass
- biomass market is developing slowly
- introduction of wood chips utilization has begun in the last years – mainly in rural area
- not a single pellet boiler was installed yet